

## Parlay i60 - Application

PARTNER  
VOXTREAM



### Parlay i60 ISDN Access Multiplexer with advanced call routing features

#### Solutions for Enterprises



Parlay i60 ISDN Access Multiplexer – a miracle in terms of possible applications



- \* Cost efficient ISDN provisioning
- \* Unique routing and access applications
- \* Value added service platform

The Parlay i60 provides cost efficient, highly flexible and very reliable voice/data access and network Solutions. It is designed to fulfil almost any wish for voice and data multiplexing and routing.

- \* Splits ISDN PRI into a number of fractional PRI lines
- \* Converts ISDN PRI / E1 into ISDN BRI
- \* Sophisticated call routing options
- \* More than 52 different application available
- \* No PBX modifications required

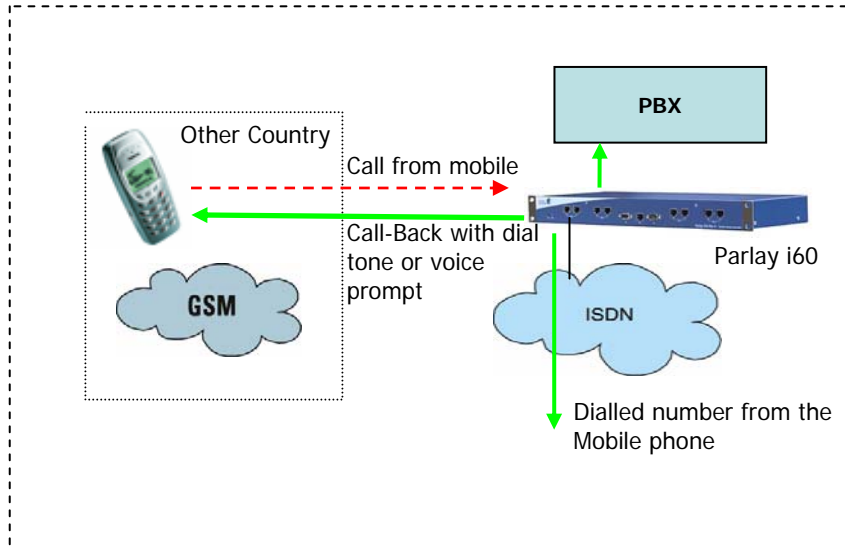


## Parlay i60 - Application



### Mobile Call Charge Saver for Enterprises

Parlay i60 as Call-Back Node saves money on mobile calls made from abroad



#### Functionality

- Mobile user calls his company
- The Parlay i60 analyses callers' CLI
- If CLI is known the i60 will Call-back
- PIN verification in case of missing CLI
- Voice Prompts for guidance
- Pre-programmed DDI numbers: Just dial the DDI number. No additional dialling required
- Rejects calls in case they are not authorised
- CDRs provided to billing application if required

#### Benefits

- Save approx. 50 % on the mobile bill (international calls)
- No abuse possible – Only verified callers are allowed
- Easy to use
- Do not require any changes in the PBX



#### How to use (non DDI):

1. Call call-back No. from your mobile
2. Wait for call back – answer - hear voice guidance
3. Dial the home country phone number you want to call.

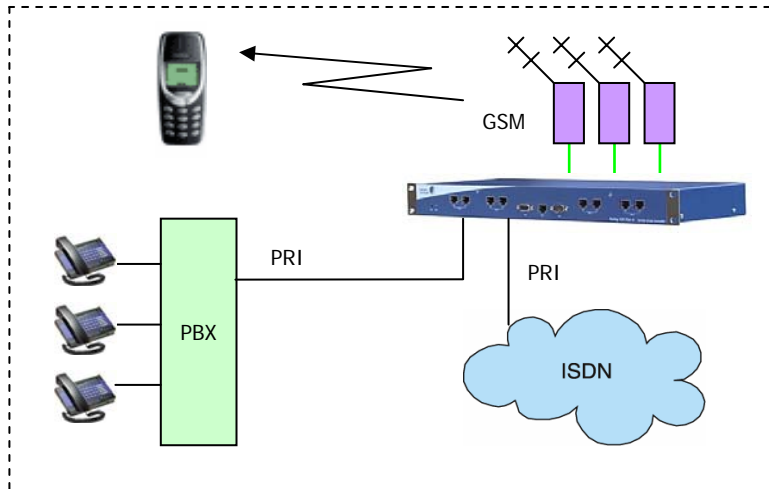
## Parlay i60 - Application



### GSM Gateway

Parlay i60 analyses all outgoing traffic on the PRI line. If a mobile number is called, the call is automatically routed to the GSM Gateway.

Incoming calls are forwarded to pre-programmed extensions.



### Functionality

- Analyses all outgoing calls
- Routes mobile calls automatically to the GSM gateways
- Routing to most optimal GSM carrier if SIM cards from more than one carrier
- Re-routing to ISDN if GSM Gateways are busy etc.

### Benefits

- No change in calling behaviour
- No change in the PBX, no routing table to maintain
- Cheaper mobile-to-mobile calls
- No synchronisation problems on the PBX
- Caller identification avoids unauthorised use



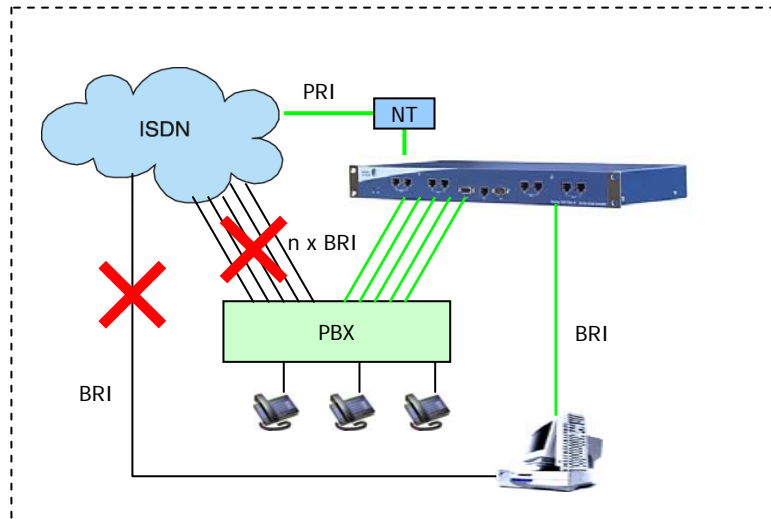
## Parlay i60 - Application



### ISDN Basic Rate to Primary Rate Conversion

Parlay i60 connects any kind of ISDN BRI terminal equipment onto a single PRI access line

Possible when: 1) No. transfer from BRI to PRI 2) Cost efficient fractional PRI



#### Functionality

- Converts ISDN PRI line into ISDN BRI interfaces
- Routes incoming calls by Called Party Number
- Supports AOC to the PBX
- Dynamic B-channel assignment
- Remote Maintenance

#### Benefits

- Saves monthly BRI line subscription fees
- No modification or replacement of PBX or other ISDN equipment required
- Platform for Value Added Services

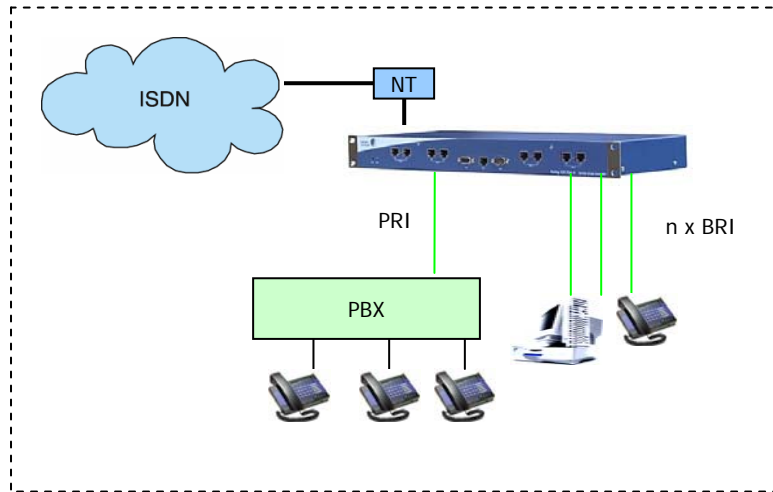


## Parlay i60 - Application



### Intelligent Termination

Parlay i60 connects any kind of ISDN terminal equipment onto a single PRI/E1 access line



### Benefits

- Saves monthly line subscription fees
- Adds advanced routing for further savings and features
- Creates a corporate numbering plan
- Allows free-of-charge internal calls

### Functionality

- Routes incoming calls by
  - Called Party Number
  - Calling Party Number
  - Bearer Service
  - Etc.....
- Presents individual Calling Party Numbers to the carrier's node
- Supports AOC to the PBX
- Dynamic B-channel assignment
- Supports Point-Point and Point-Multipoint terminals



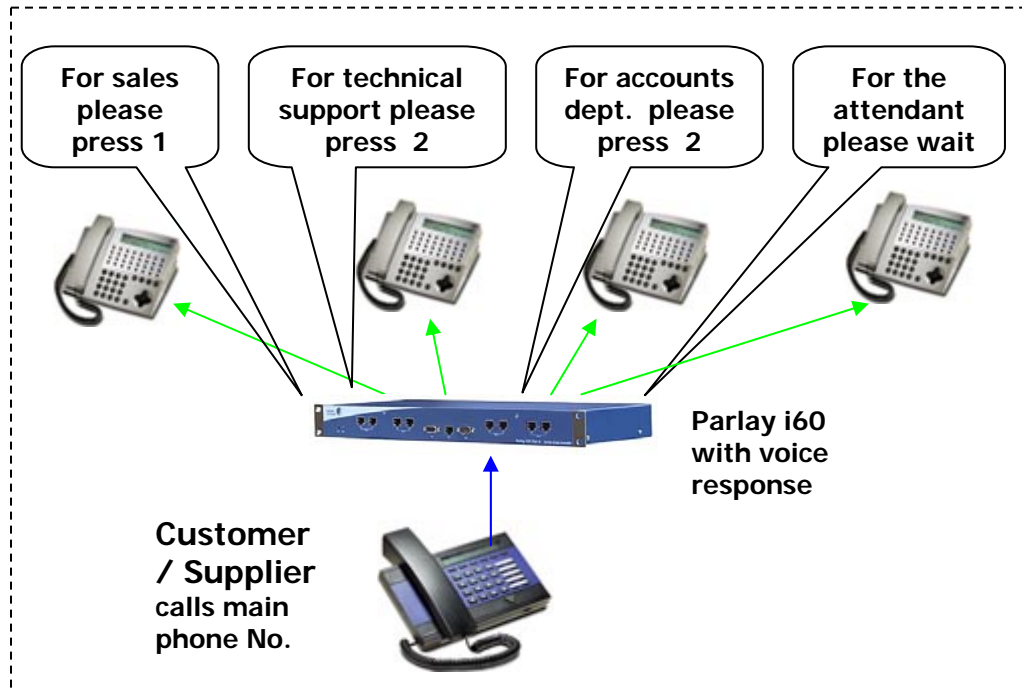
## Parlay i60 - Application

PARTNER  
VOXTREAM



### Automated Attendant

Add Automated Attendant features to any PBX



### Functionality

- One or multi level voice service messages structure
- Works with any PBX with ISDN interface
- Users may record voice messages themselves

### Benefits

- Reduces No. of calls waiting for the Attendant to answer
- No change and no upgrade of the PBX
- Low add-on cost

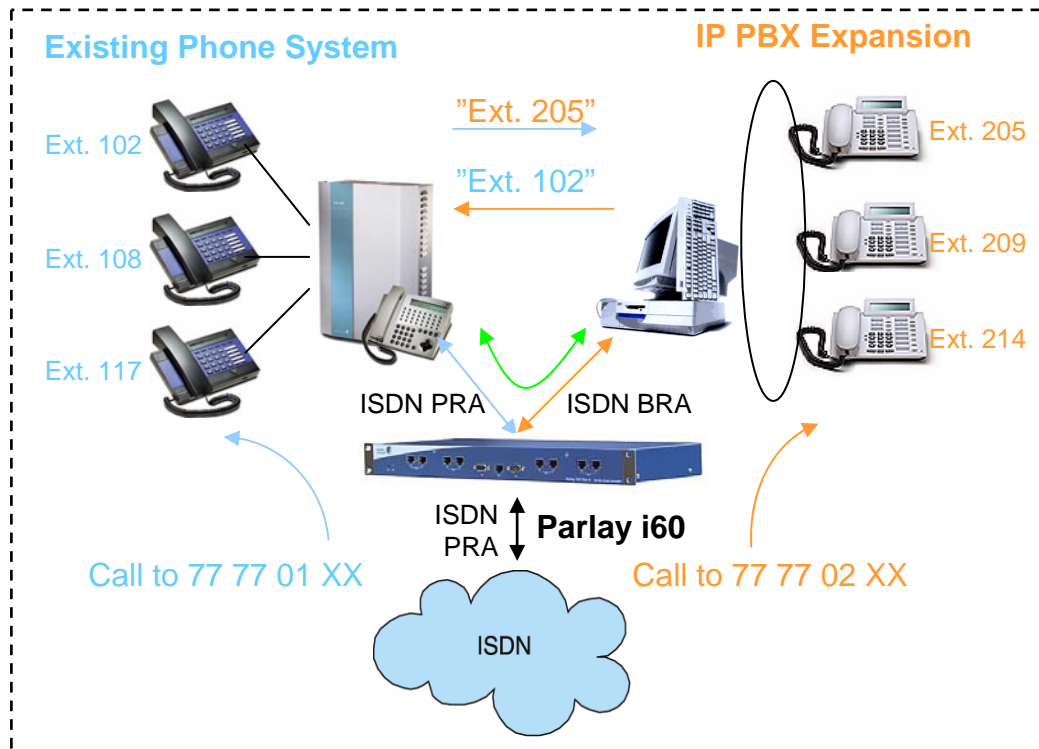


## Parlay i60 - Application



### IP PBX Add-on

Expand legacy PBX with an IP PBX (for the call centre?) – Achieve full integration



### Functionality

- Incoming calls are distributed to the PBX'es based on:
  - Called Party Number
  - Calling Party Number
  - Time of Day
  - Availability
  - Other criteria.....
- Calls between the legacy PBX and IP PBX are handled internally
- Provides Call Statistics and Call Detail Records

### Benefits

- Just one phone number for both PBX Systems
- Save line subscription fees
- Very flexible, does not require any change in the legacy PBX
- Free-of-charge internal calls between legacy PBX and IP PBX

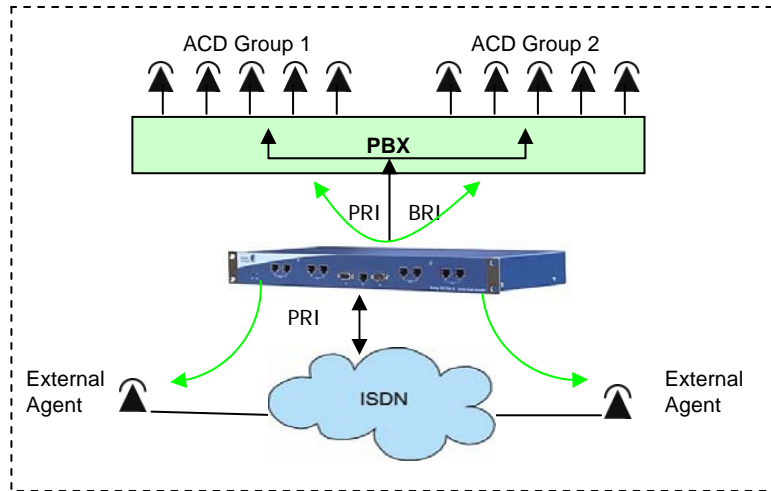


## Parlay i60 - Application



### Automatic Call Distribution

Parlay i60 distributes inbound calls to different internal ACD groups as well as external agents.



### Functionality

- Programmable distribution parameters
  - Called Number
  - Calling Number
  - Voice Calls
  - Data Calls
  - ETC .....
- Provides Call statistics and Call Detail Records
- Re-routing to a Back-up group or external agents in case one ACD-group is overloaded

### Benefits

- Supports BRI and PRI terminal links
- Easy setup, easy programming
- Very flexible, does not require any change in the PBX
- Very competitive, cheaper than a software upgrade of the PBX





# Parlay i60 - Application

PARTNER  
VOXTREAM

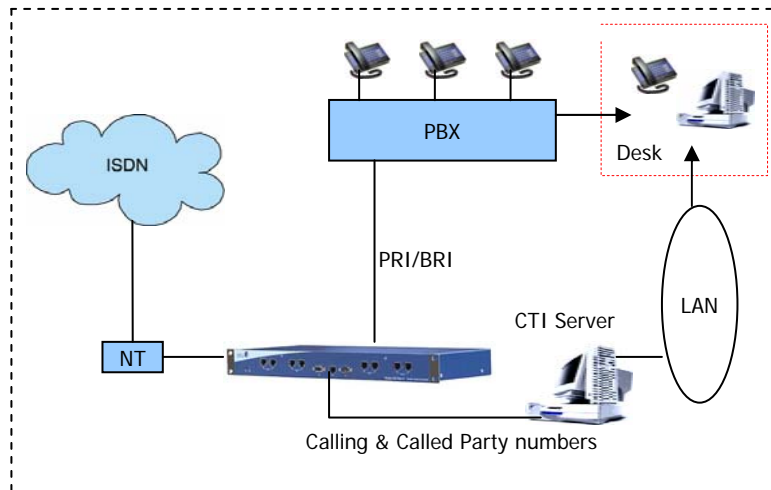


## CTI Link

Parlay i60 realises Computer Telephone Integration (CTI) between any PBX and software tools like ERP systems.

In case of an incoming call, the Calling and Called Party Numbers are forwarded to the CTI server. This allows a screen pop-up with caller-specific information.

On outgoing calls Parlay i60 establishes the call to the number provided by the CTI server.



## Functionality

- Transparently passes all calls between ISDN and PBX
- Forwards relevant information e.g. calling party/called party to the CTI server
- Saves Call Details Records on demand

## Benefits

- Universal solution, fits with any PBX. Works even with those PBXes which do not support CTI at all
- No change and no upgrade of the PBX
- Often much more cost efficient than the original CTI software for the PBX

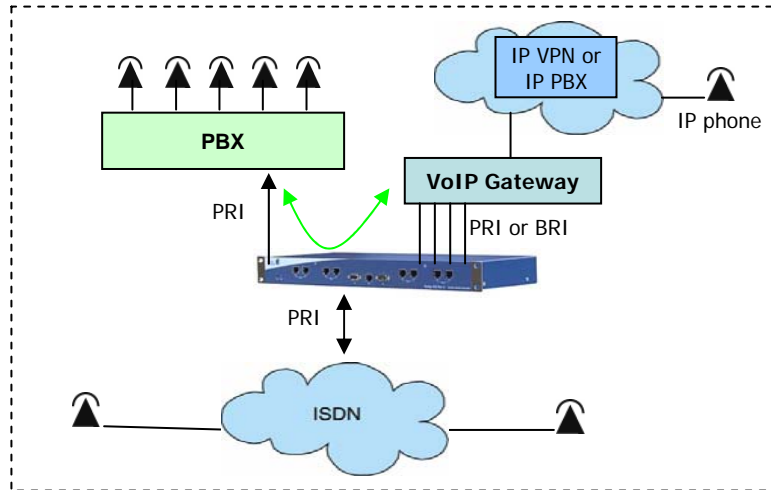


## Parlay i60 - Application



### Integration of VoIP Gateway

Parlay i60 saves line subscription fees and allows free-of-charge internal calls between the PBX and the IP VPN



### Functionality

- Incoming calls are distributed to either PBX or VPN based upon
  - Called Party Number
  - Calling Party Number
  - Time of Day
  - Availability
  - Other criteria.....
- Calls between PBX and VPN are handled internally
- Provides Call statistics and Call Detail Records

### Benefits

- Just one phone number for both PBX and VPN
- Save line subscription fees
- Very flexible, does not require any change in the PBX or VPN
- Free-of-charge internal calls between PBX and VPN

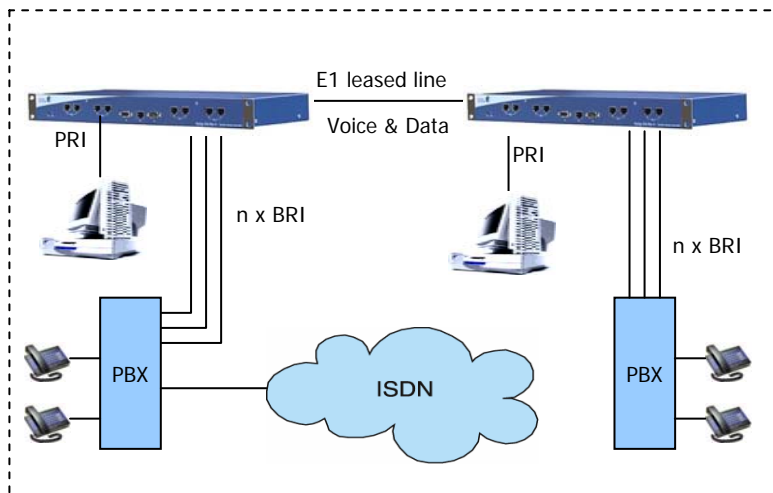


## Parlay i60 - Application



### Leased Line Termination

Parlay i60 terminates an E1 leased line, providing multiple ISDN BRI and PRI lines to different kind of terminal equipment.



### Functionality

- Forwards BRI and PRI transparently
- Reserves exclusive channels for voice and data

OR

- Dynamically assigns channels from a channel pool
- Allows local switching, free of charge internal calls

### Benefits

- Saves line rental expenses
- Improves utilisation of the leased line
- Allows corporate networks for Voice and Data
- No need for dedicated Voice/Data networks



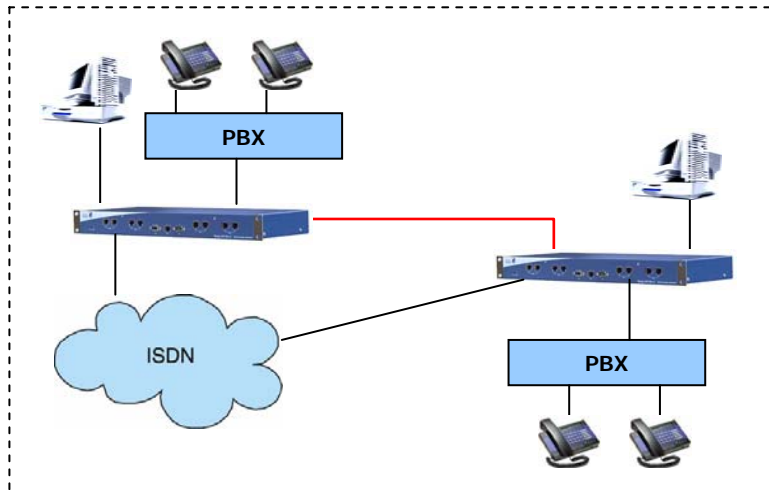
# Parlay i60 - Application

PARTNER  
VOXTREAM



## ISDN Dial Backup

Parlay i60 monitors the availability of the primary link. If it fails, calls are seamlessly re-routed via the ISDN backup link.



## Functionality

- Relay bridging from terminal equipment to one PRI line
- Programmable cause codes triggers re-routing
- In case of congestion on either link, Parlay i60 selects the other link

## Benefits

- No connections are lost
- Very competitive, call charge only when backup line is used

